

SAMUT-SAMOT RESOURCES TERMS OF USE

When you downloaded this resource from **samutsamot.com**, it is understood that you have agreed to abide by its Terms of Use. Below is a summary of what you may and may not do with this resource. For the complete terms, look for the **Terms of Use** page in the **samutsamot.com** website.

COMMERCIAL USE AND MASS DISTRIBUTION OF THIS RESOURCE IS PROHIBITED.

YOU MAY

- You may print, photocopy, and distribute the resource to your students, tutees, or children at home or in the classroom during in-person classes.
- You may show and distribute the resource to your online students as long as they know that it is for their own personal and non-commercial use.
- You may use the resource as part of your academic research work after obtaining the permission of the owner of **samutsamot.com**.

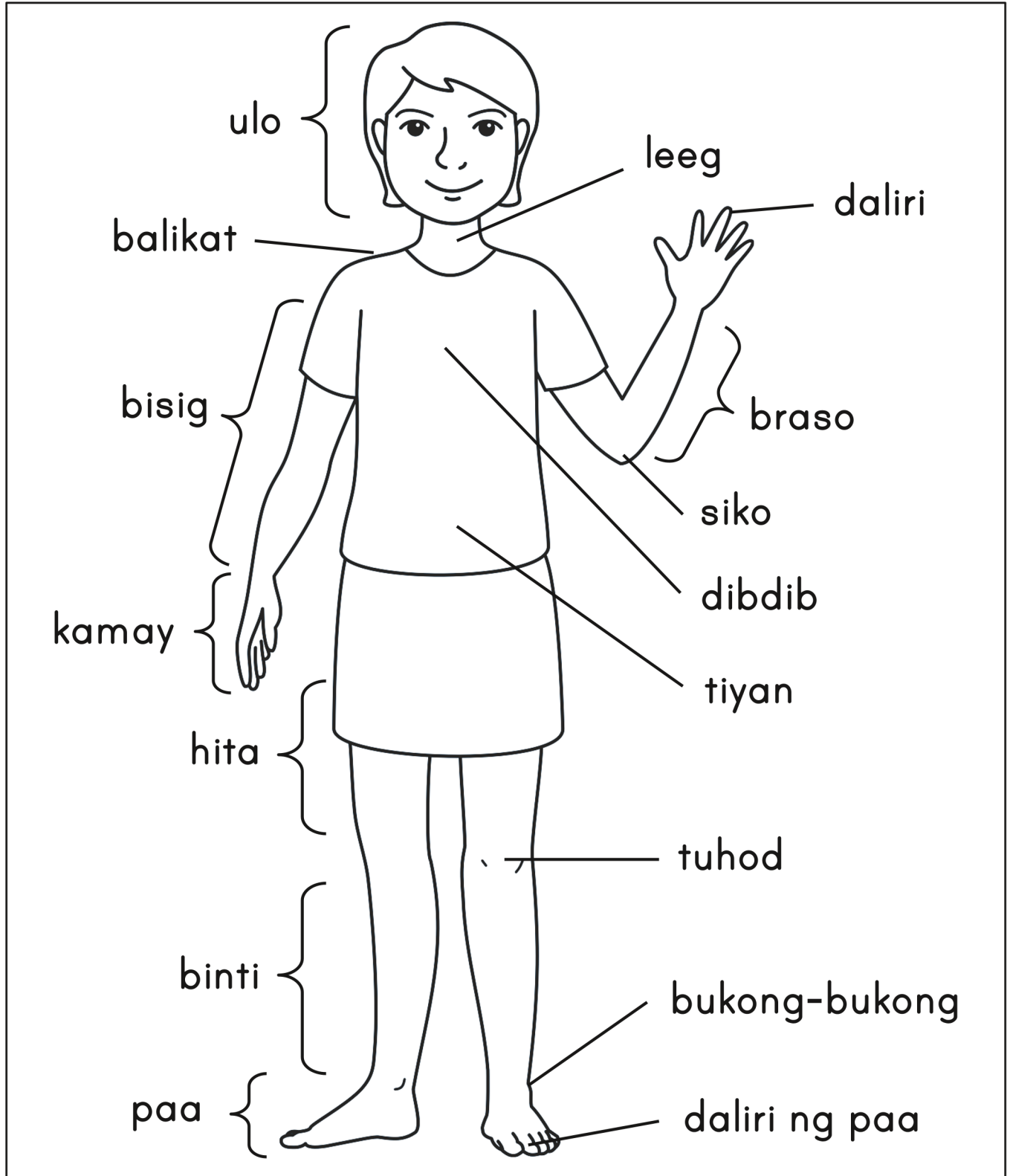
YOU MAY NOT

- You may not upload the resource or any part of it anywhere on the internet (except for online teaching).
- You may not edit the resource by adding or removing any type of marking.
- You may not extract or copy images from the resource.
- You may not claim the resource as your own.
- You may not sell the digital copy, print outs, or photocopies of the resource.
- You may not make the resource a part of digital or physical products that are to be sold.

Questions regarding the allowable use of the **samutsamot.com** resources should be emailed to **samutsamot.mom@gmail.com**.

Mga Bahagi ng Katawan

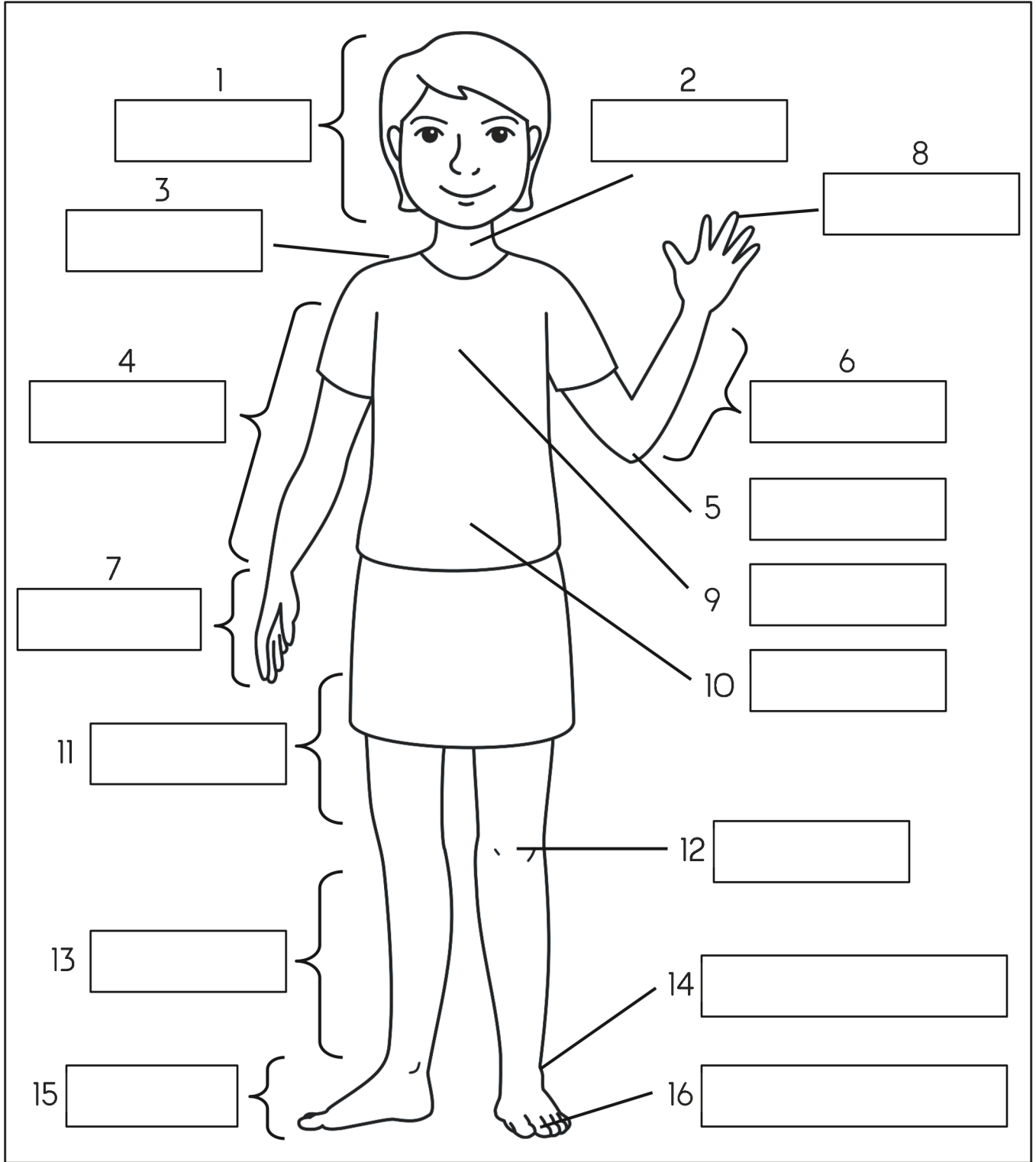
Sa tulong ng larawan sa ibaba, pag-aralan ang mga salita para sa mga bahagi ng katawan.



Pangalan _____ Petsa _____

Mga Bahagi ng Katawan

Isulat sa loob ng kahon ang salita para sa itinuturo na bahagi ng katawan. Kulayan ang larawan.



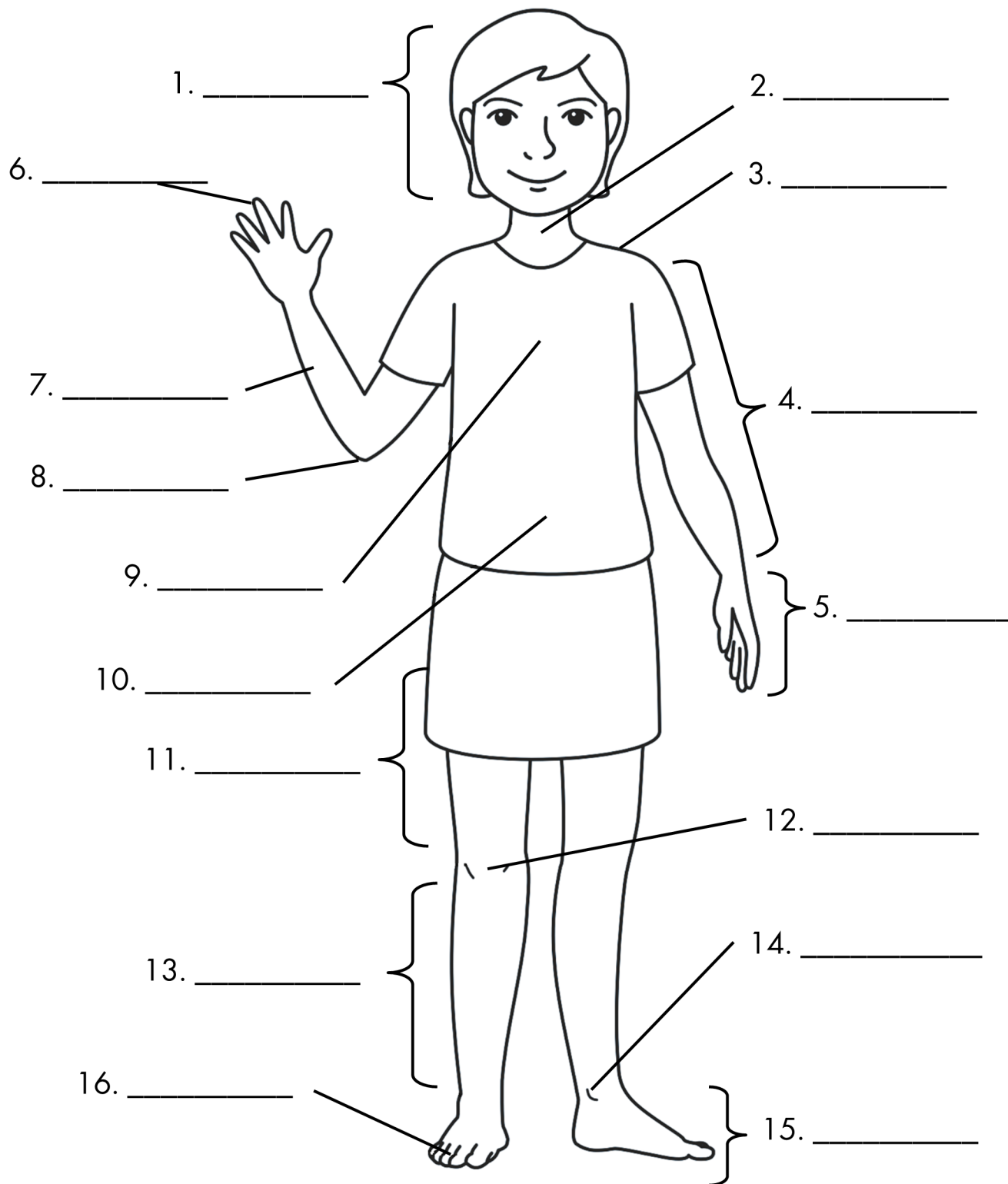
Mga Bahagi ng Katawan

Isulat ang pangalan ng bawat bahagi ng katawan. Gumuhit ng linya mula sa bahagi ng katawan hanggang sa pangalan nito.



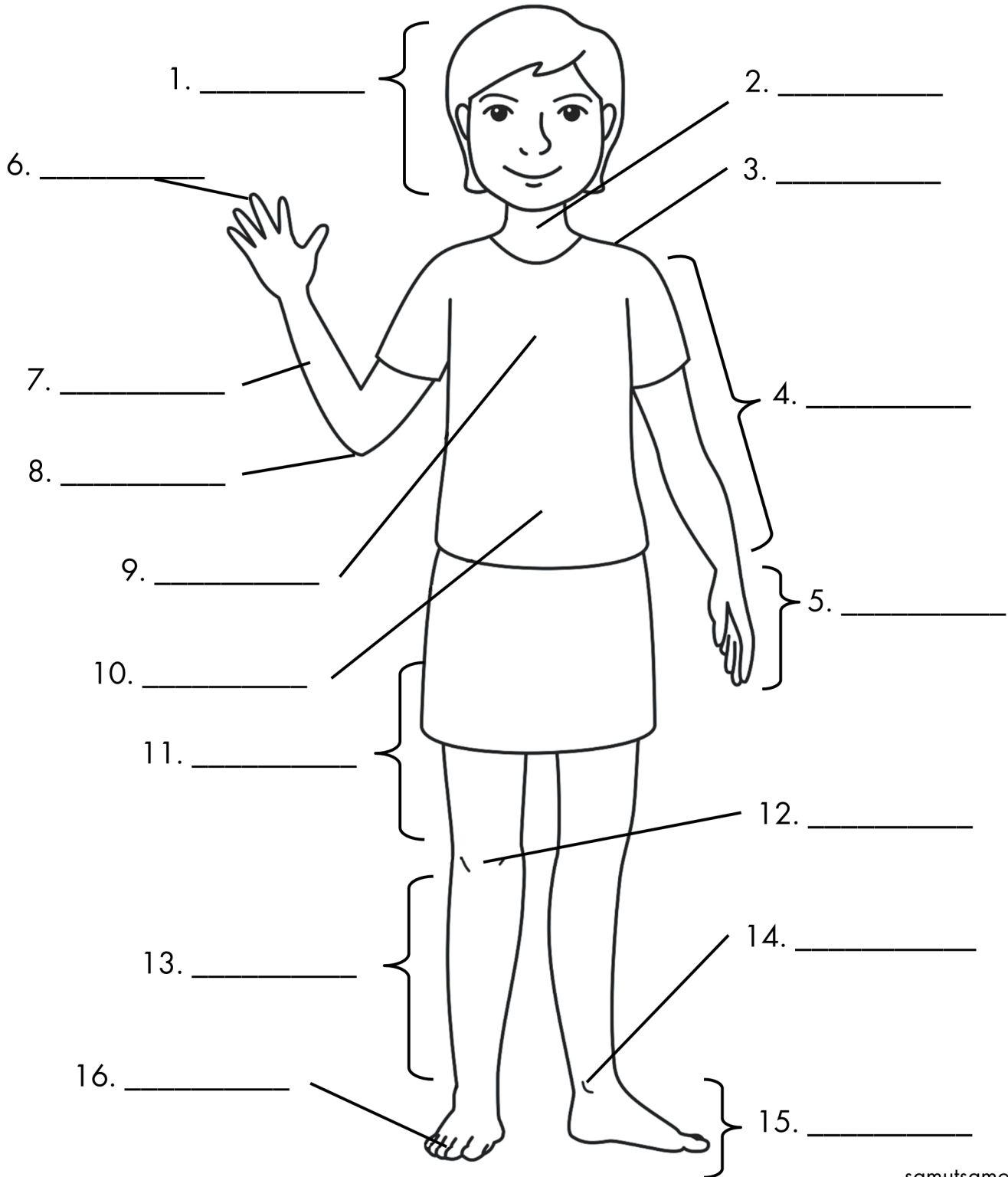
Mga Bahagi ng Katawan

Isulat sa patlang ang pangalan ng bahagi ng katawan.



Mga Bahagi ng Katawan

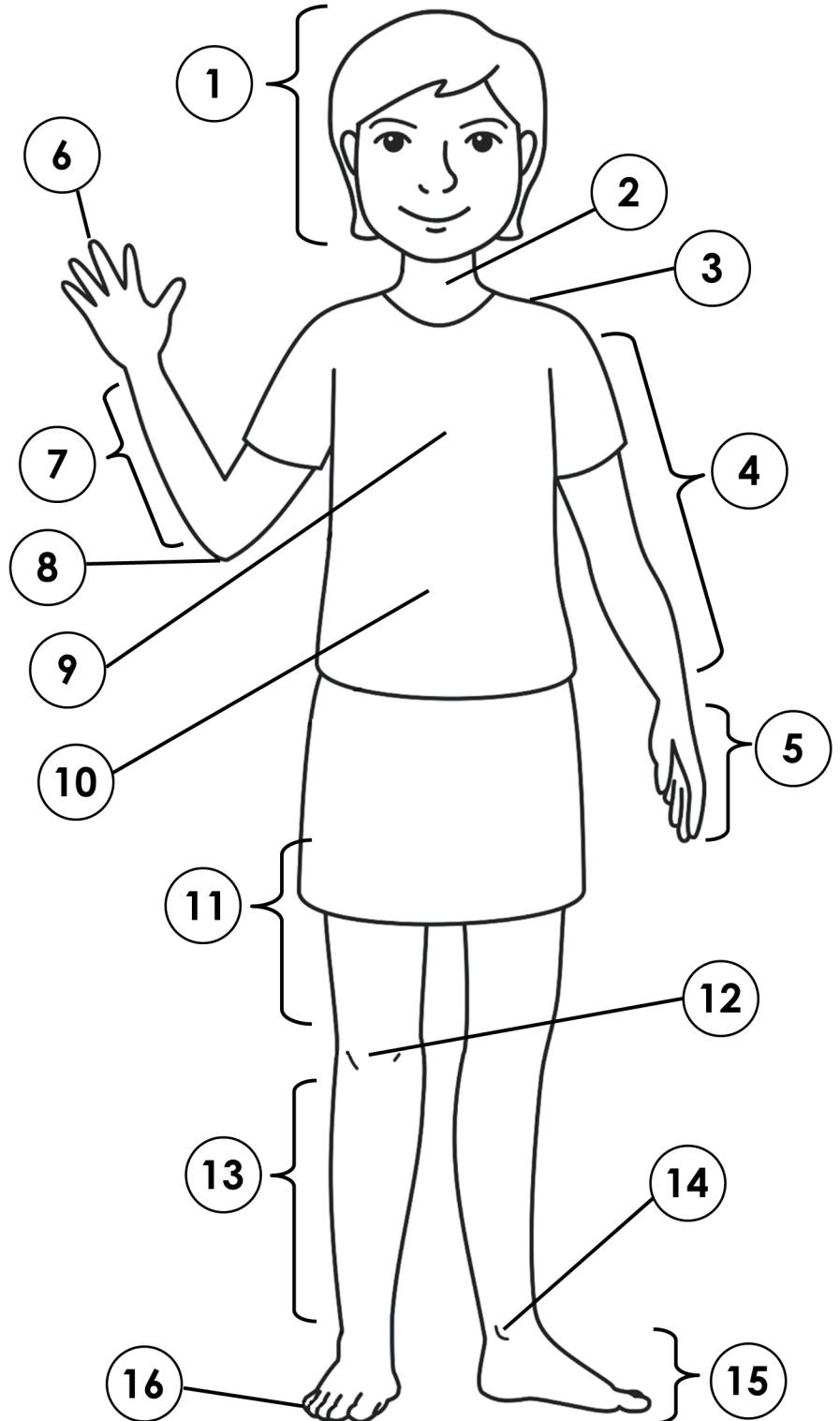
Isulat sa patlang ang pangalan ng bahagi ng katawan. Pumili sa mga sumusunod na salita: balikat, binti, bisig, braso, bukong-bukong, daliri, daliri ng paa, dibdib, hita, kamay, leeg, paa, siko, tiyan, tuhod, at ulo.



Mga Bahagi ng Katawan

Isulat sa bilog ang tamang bilang ng bahagi ng katawan.

- kamay
- siko
- tiyan
- tuhod
- paa
- daliri
- ulo
- balikat
- braso
- dibdib
- leeg
- binti
- daliri ng paa
- hita
- bisig
- bukong-bukong



Mga Bahagi ng Katawan (Mga Sagot)

Isulat sa patlang ang pangalan ng bahagi ng katawan. Pumili sa mga sumusunod na salita: balikat, binti, bisig, braso, bukong-bukong, daliri, daliri ng paa, dibdib, hita, kamay, leeg, paa, siko, tiyan, tuhod, at ulo.

